

The 4th of July Parade in Stephenville, Texas is here! Please review the attached files and information below:

Parade Check-In – 7:00AM (no early entries will be permitted). Please arrive no later than 8:30AM to ensure your spot in the lineup.

Parade Entry – registrants will enter through the main entrance of City Park (located off of Graham Street)

- Staff will direct you in the proper direction.
- Please arrive with your float ready to roll.
- Should last minute touches be necessary, you will be directed to a designated area in which you can add/remove items before securing your final place in the lineup.

Drop-off Area - this area is to be used for participant drop-off ONLY – vehicles are not permitted to park here during the parade. We do not have the appropriate amount of parking to accommodate each and every participant + vehicles.

***PLEASE DO NOT USE THE PARK AS YOUR MEETING LOCATION** – we ask that you carpool and arrive with the majority of your party in tow.

Parade Vehicle Waiting Area - this area is designated for floats/vehicles to wait on their full party, decorate, or fix/solve any unforeseen circumstances (we all know they happen)

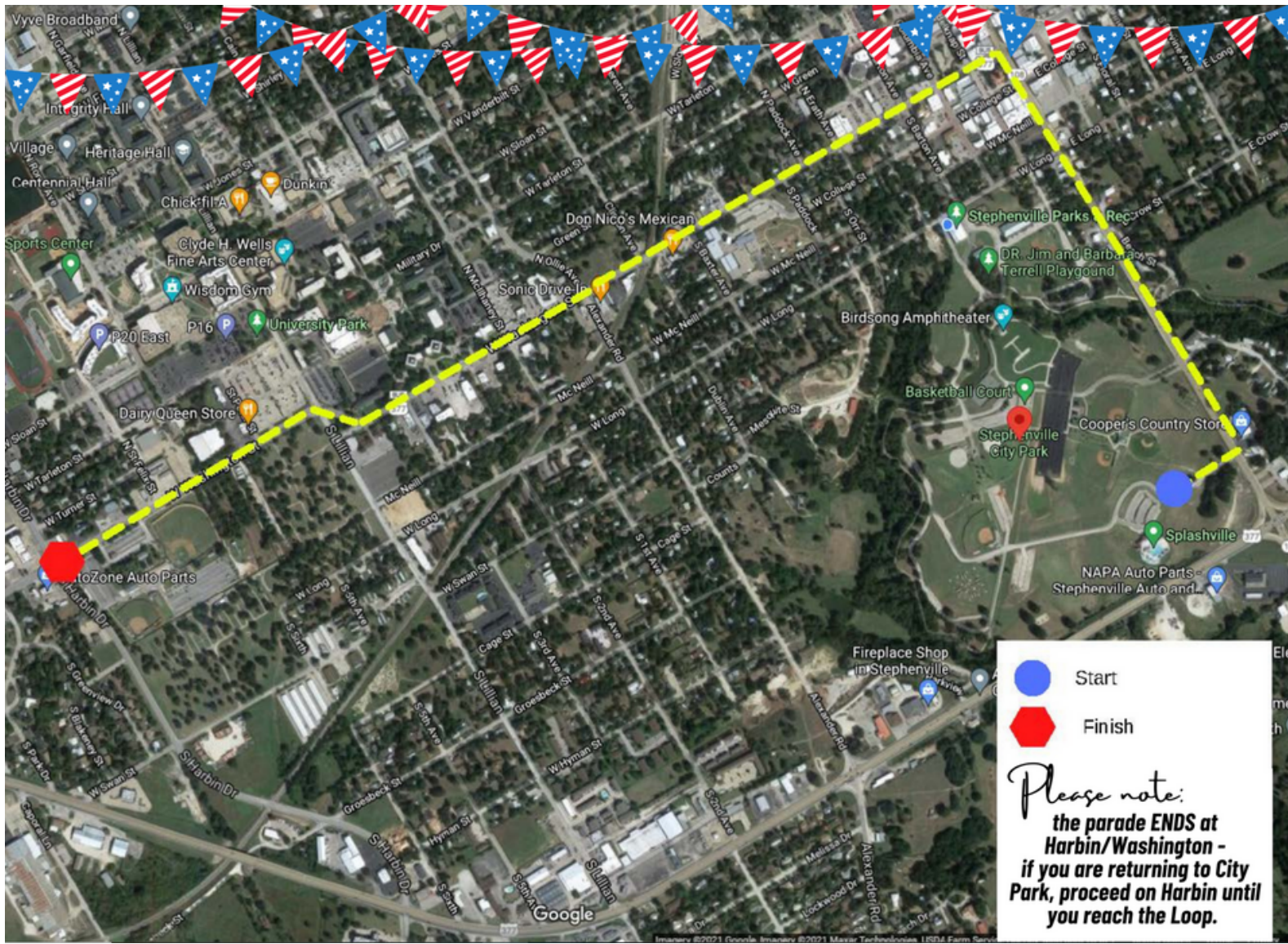
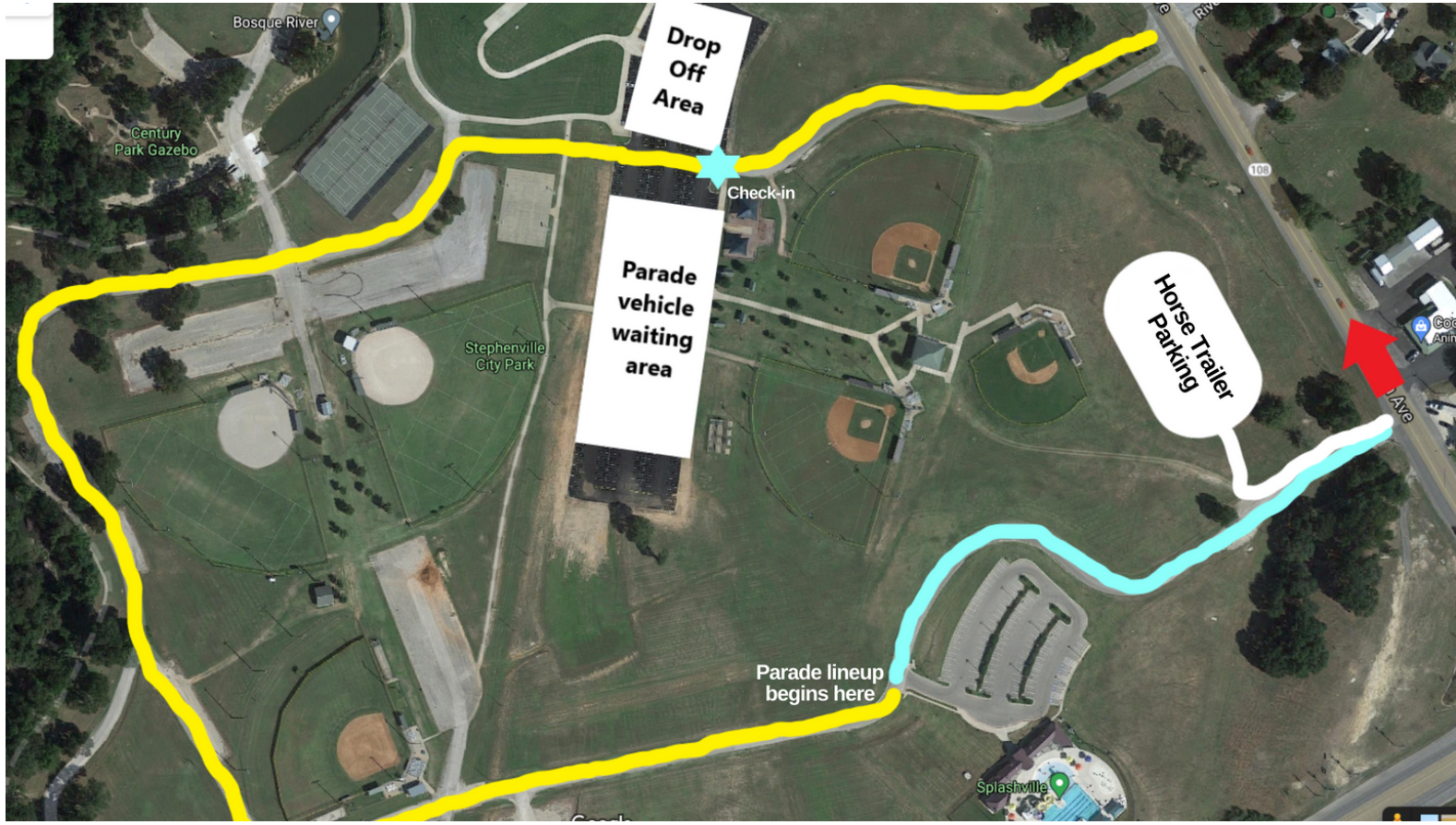
Parade Lineup – lineup is first come, first in-line. If you have multiple vehicles in your fleet, you must arrive at the same time. Once you are in the parade line, there will be NO moving/rearranging. Spacing will be tight and we must be mindful of that to ensure we can fit everyone in the park in an organized manner.

Horse Trailers ONLY - you will enter through Splashville entrance and go into the grassy area to the right – there will be signs to guide you! Please unload and stay in the grass until the parade is departing. You can jump in line where your party is located, or where you see fit for yourself and the horses.

Parade Route - we will leave the park out of Splashville's entrance. Parade will continue North on Graham Street - turn left on Washington and proceed to Harbin Street. All parade traffic must turn left (South) on Harbin at the end of the parade route. Attached is a labeled parade map for your viewing just in case you need clarification! We have also included the parade check-in map and the schedule of events for the celebration in the park following the parade.

Please view our parade rules and regulations below:

- Each unit must maintain its assigned position throughout the entire parade & keep a distance of no less than 20 feet & no more than 30 feet from the preceding unit. Always maintain your spacing – do not bunch up. Everyone must proceed in a forward motion no faster than 5 mph. At no time may any vehicle back up.
- All animal units must provide their own clean-up crew that will remain with animals at all times. All animals must have updated vaccinations & be in good medical health, & able to cope with crowds, noise, & other animals. The Parade Committee reserves the right to ban from the parade any animal, horse or rider deemed unsafe to other riders or spectators. All animals & horses must be in the control of the handlers at all times. Any animal deemed unsafe will be removed from the parade.
- Each float/truck driver must be the holder of a valid driver's license. The driver must stay with the float at all times, including when in staging area.
- An adult must be on floats where there are children. Ratio of adults to children should be 1:5 for those under age 16.
- IN CASE OF EMERGENCY, which may require police or fire vehicles, all entries are required to move to the far right.
- NO alcoholic beverages on any parade entry at any time before or during the parade!
- Please use common sense, as safety is our primary concern for both participants & spectators.
- All parade participants shall conduct themselves in a manner appropriate for a family audience of all ages, march in a peaceful & orderly fashion, & participate in a civil manner with respect to other participants & the public. Parade participants shall not use obscenity, profanity, defamation, threats, or fighting words. Participants may be removed from parade at the discretion of parade staff, city officials or law enforcement.



 Start
 Finish

*Please note:
 the parade ENDS at
 Harbin/Washington -
 if you are returning to City
 Park, proceed on Harbin until
 you reach the Loop.*